



**MEDITERRANEAN
SECURITY
EVENT 2019**



SHUTTLE First Public Workshop

DISCUSSION TOWARDS END-USERS

OBJECTIVE

THE SHUTTLE TOOLKIT WILL BE DEVELOPED.

BUT THE CONSORTIUM WANTS TO GO FURTHER.

WE HOPE THE TOOLKIT WILL BE INTRODUCED IN MANY LABORATORIES,
BOTH FOR CASE WORK AND R&D WORK.

**IN THIS SESSION, WE WILL DISCUSS SEVERAL ASPECTS THAT WILL BE
REQUIRED TO MAKE THE TOOLKIT AS USEFUL AS POSSIBLE.**

PROGRAMME



Raise
visibility
and awareness
on SHUTTLE



Q/A
on the
Technical
Requirements



Focus points for
implementation
of SHUTTLE into
Case Work
validation
R&D studies
Education



Interaction
with
Suppliers



Future
applications



Path
To
standardization



People should know SHUTTLE



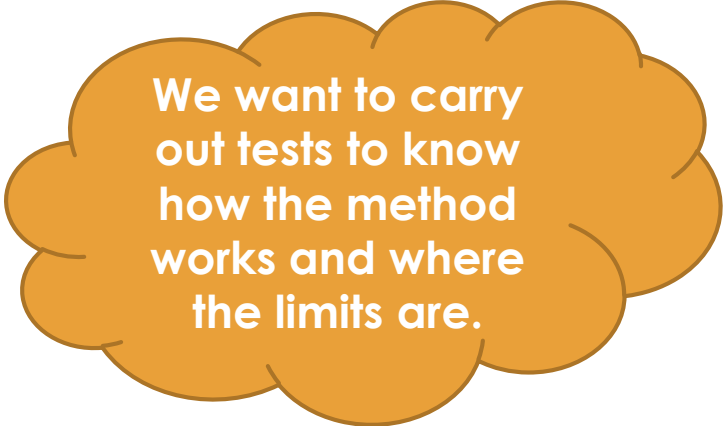
- WHAT ARE THE GOOD WAYS TO **PROMOTE** THE **TOOLKIT** TO ENSURE ITS **FUTURE ADOPTION** BY **END-USERS ORGANISATIONS** AT LARGE?
IDEAS FOR FUTURE WORKSHOPS
SYNERGIES WITH SOCIAL NETWORKS



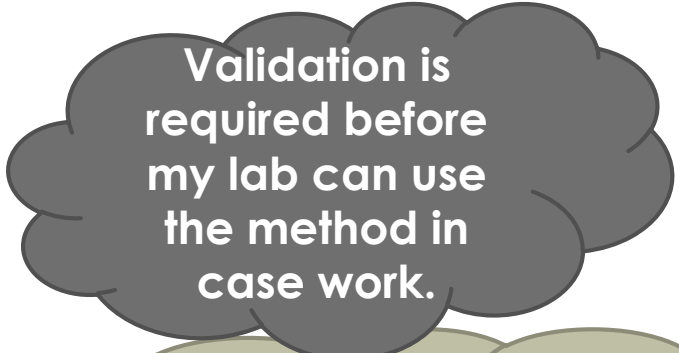
- WHO IN THE **END-USERS ORGANISATIONS** SHOULD WE **CONNECT** TO IN ORDER TO RAISE AWARENESS ABOUT THE TOOLKIT?
PROCUREMENT, TECHNICAL DEPARTMENT, ETC.
- WHO IN END-USERS ORGANISATIONS WILL MAKE THE **FINAL DECISION**?
- HOW TO **CONVEY RELEVANT ELEMENTS TO DECISION MAKERS**?
DEMO, TRADE-OFF, QUANTIFIED DATA, ETC.



The working method should be validated



We want to carry out tests to know how the method works and where the limits are.



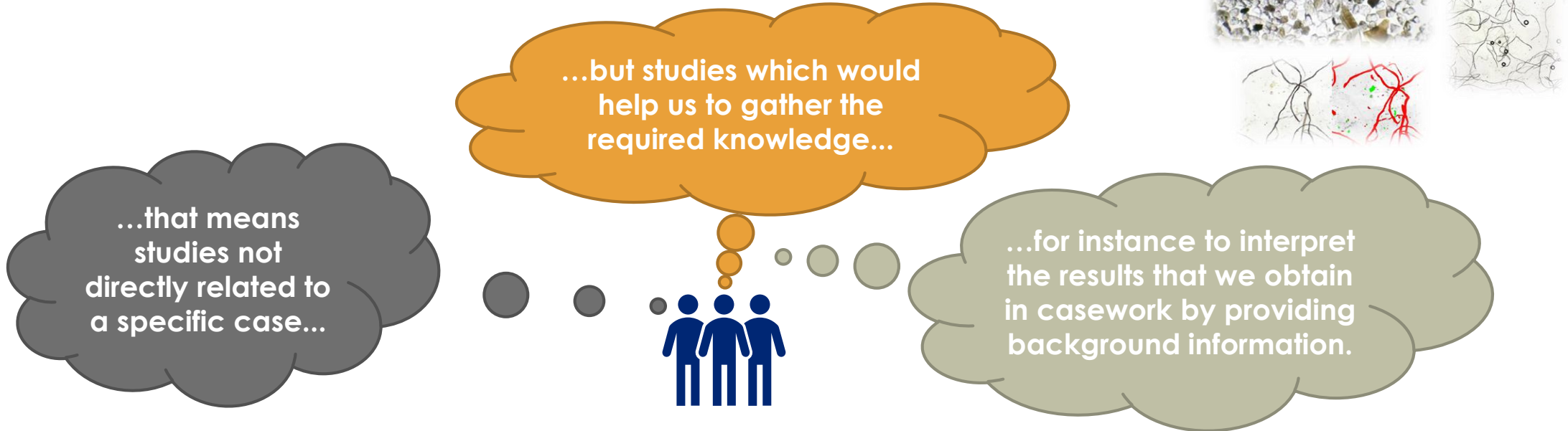
Validation is required before my lab can use the method in case work.



Validation is required for the ISO17025 accreditation of my lab as no standard is followed.

- WHAT ARE THE **REQUIREMENTS**? WHAT KIND OF **TESTS** ARE NECESSARY?
- IS **LOCAL VALIDATION** BY EACH LABORATORY REQUIRED?
- OR COULD PEOPLE PARTICIPATE IN A **CENTRALISED** VALIDATION, I.E. NOT EVERY LAB HAS TO CARRY OUT A FULL SET OF TESTS?
- ANY OTHER BUSINESS REGARDING '**TRUST THE METHOD**' BEFORE USE IN CASEWORK?
- **WE AS SHUTTLE END-USERS WILL CONDUCT VALIDATION ACTIVITIES IN OUR LABORATORIES IN PCP PHASE 3 TO CHECK HOW THE MACHINE DELIVERED FITS OUR NEEDS IN EVERYDAY ACTIVITIES.**

In addition to casework SHUTTLE could also play an important role in R&D studies...



- COULD SHUTTLE FORM A TOOL IN INVESTIGATING THE **BACKGROUND PRESENCE** OF SEVERAL TRACES?
- WHAT KIND OF **STUDIES** WOULD BE USEFUL? **SHEDDING** STUDIES?

Method should be implemented in the lab...

... but many
things can
block the
implementation
...

...we need
to identify
them!

And find
ways to
mitigate!



Machine price

Validation

Quality systems

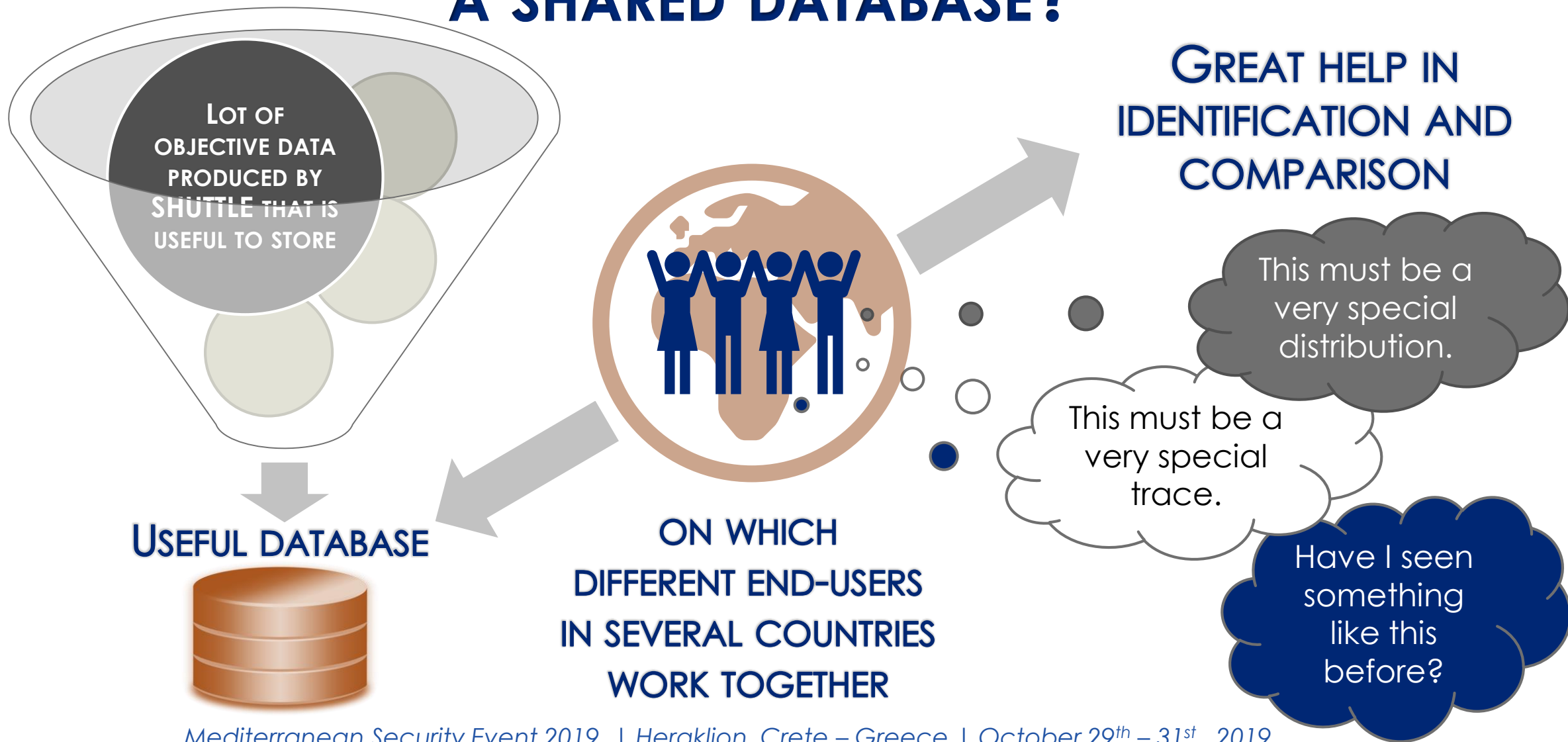
Procurement of disposables

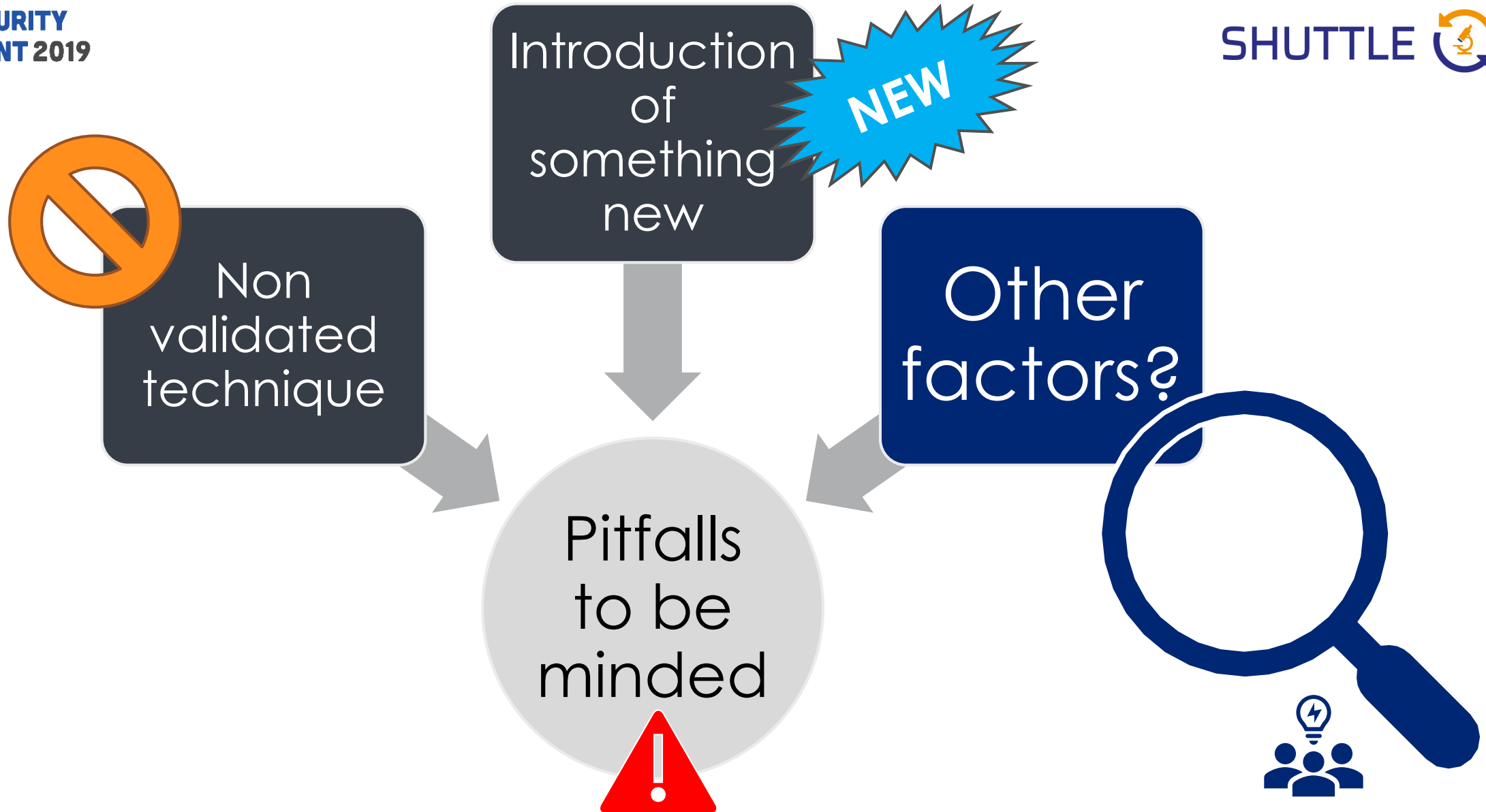
Software's ease of use

Needs for collaboration of groups
which are not used to it

Lab personnel cannot choose tapes

HOW TO IMPLEMENT A SHARED DATABASE?





FUTURE APPLICATIONS

 **SHUTTLE will be the first system where automatic microscopic images and image processing are combined.**



⇒ **Possibility to extend the image processing after SHUTTLE.**

For which application?

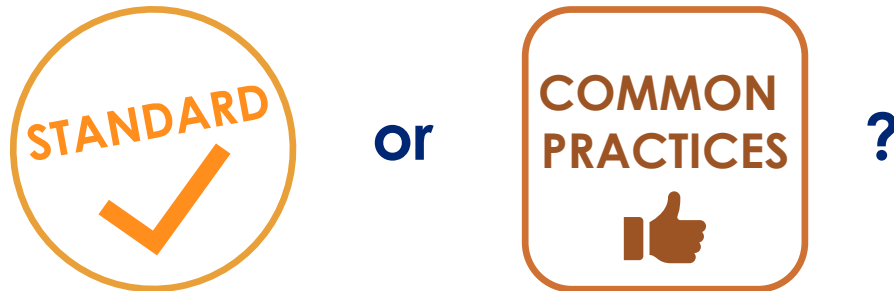
sustainability
practitioners
training international curriculum
attracting
awareness
experts
network
broader
community
suppliers
policymakers
evolution
cooperation

HOW DO YOU IMAGINE THE COLLABORATION/INTERACTION WITH THE SUPPLIERS?



PATH TO STANDARDIZATION

Which modules / parts / sub-parts of the SHUTTLE toolkit can we standardise?
Only tests?



- ⇒ To which standards can we contribute?
- ⇒ Which standardisation bodies should we contact?
- ⇒ Should we collect the views of a large number of end-users?
- ⇒ What are the different steps?



ACKNOWLEDGEMENT

THE WORK PRESENTED IN THIS PAPER RECEIVED FUNDING FROM THE EUROPEAN COMMISSION, UNDER THE H2020-SEC-2016-2017 TOPIC SEC-09-FCT-2017: TOPIC "TOOLKITS INTEGRATING TOOLS AND TECHNIQUES FOR FORENSIC LABORATORIES" ENTITLED SHUTTLE (SCIENTIFIC HIGH-THROUGHPUT AND UNIFIED TOOLKIT FOR TRACE ANALYSIS BY FORENSIC LABORATORIES IN EUROPE) UNDER GRANT AGREEMENT NUMBER 786913.

Thank you for your attention